

# Qexp-FS Meat 5-species Kit

With all the ongoing issues of food safety it is very important for the registered food facilities to be able to implement preventive controls to monitor and track the food quality reliably and efficiently. The *Qexp*-FS Meat 5-species Kit can quickly identify 5 meat sources such as cattle, pig, chicken, goat, and sheep providing an efficient meat source-tracking method for manufacturers and consumers.

## True or not true? | The labeling claims on foods

To meet the increase in global meat consumption, reconstructed meat was created. Reconstructed meat not only provides different meat sources for consumers but also solves the problem of increasing demand for meat products. However, some manufacturers mix meat with cheaper ingredients for profiteering therefore consumers could completely lose trust in meat products. The most classic example is the 2013 horsemeat scandal in Europe.

## Qexp-FS provides a proven testing methodology for food safety

Whether due to religious beliefs or the trend of having plant-based meats, vegetarianism is no longer limited to specific groups. The food source and composition have once again become an important issue. Utilizing the *Qexp*-FS Meat 5-species Kit, the food safety labs can quickly test and monitor the food quality and composition in a simple, fast and accurate way.

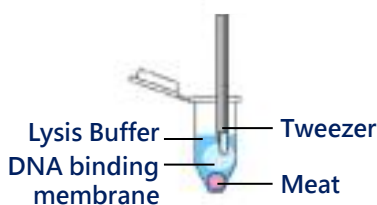
## 3 STEPs to identify the composition of the meat

Sample Collection

Direct PCR

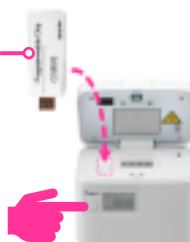
Results Analysis

Concept of *Q-Dip*



*Qamp<sub>mini</sub>* Thermal Cycler

- ✓ Pre-program chip
- ✓ One-button start!
- ✓ Save time!
- ✓ Easy to use!



*Qsep* Series Fragment Analyzer



*Q-Analyzer*

- 1 ✓ User-friendly
- 2 ✓ 3 steps complete
- 3 ✓ Automated reporting

# Qexp-FS Meat 5-species Kit "Features"

**Extraction Free**  
**Direct PCR**

No need for nucleotide extraction  
Start PCR after simple lysis  
Save time and make it easier to operate  
Genetic Testing as life

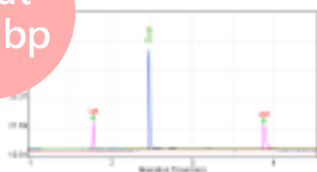


**Multiple Targets**

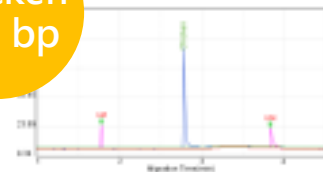
Multiplex PCR for each gene

## Five Species of Meat Source Identification

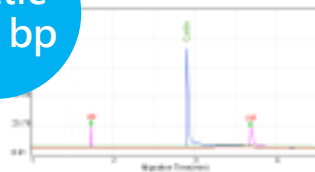
Goat  
159 bp



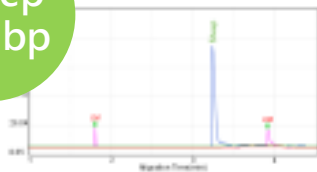
Chicken  
228 bp



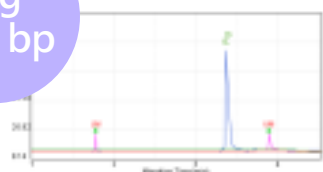
Cattle  
273 bp



Sheep  
334 bp

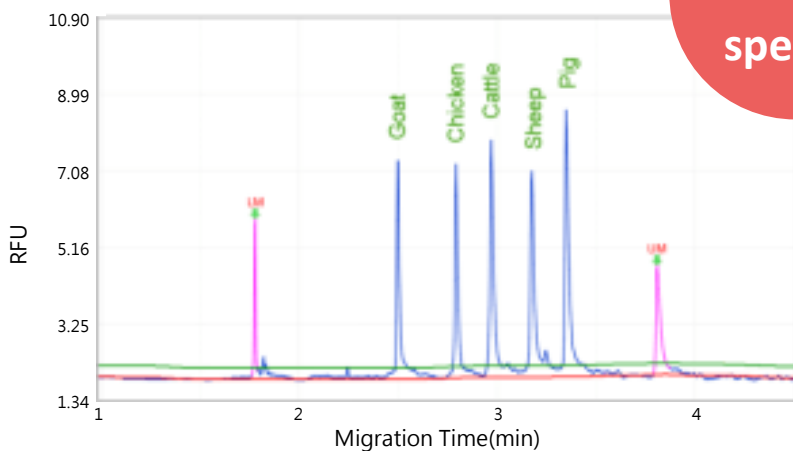


Pig  
396 bp



**5**

**species**



## Order Information

Catalog No.	Product	Unit
C900200-24	Qexp-FS Meat 5-species Kit	24 rxn
C900200-48		48 rxn

