

Qexp-Aqua Shrimp Disease Detection Kit

The shrimp farming industry is an important economic industry in the world. However, shrimps are easily infected by viruses or bacteria increasing the mortality of shrimp. A fast and accurate pathogen detection method for the detection and prevention of shrimp disease is very important. The *Qexp-Aqua* shrimp disease detection kits provide eight common shrimp pathogens identification to prevent the occurrence of diseases minimizing losses.

◆ WSSV

(White spot syndrome virus)

with highly lethal and contagious to shrimp. WSSV should be detected early in the shrimp farm to control the spread of the virus.

◆ EHP

(*Enterocytozoon hepatopenaei*)

an intracellular parasite that mainly infects the hepatopancreas tissue of shrimp, therefore interfering with the shrimp from absorbing nutrients and resulting in falling production of shrimps.

◆ AHPND

(Acute hepatopancreatic necrosis disease)

is caused by the infection of shrimp by *Vibrio parahaemolyticus*. The disease results in the quick and mass death of shrimp fry.

◆ NHP

(Necrotizing Hepatopancreatitis)

infected shrimp show obvious symptoms, such as soft shells and flaccid bodies, black or darkened gills, etc.

◆ HPV

(Hepatopancreatic parvovirus)

will destroy the shrimp hepatopancreas, causing anorexia, growth retardation, and soft shell in shrimp.

◆ MBV

(*Penaeus monodon*-type baculovirus)

mainly infects the shrimp hepatopancreas and midgut epithelium. The surviving infected shrimp will become carriers that could spread the disease through shrimp eggs or feces.

◆ IHNV

(Infectious hypodermal and hematopoietic necrosis virus)

infection causes abnormal growth of shrimp, it also causes acute mass mortality in shrimp fry.

◆ DIV

(Decapod iridescent virus)

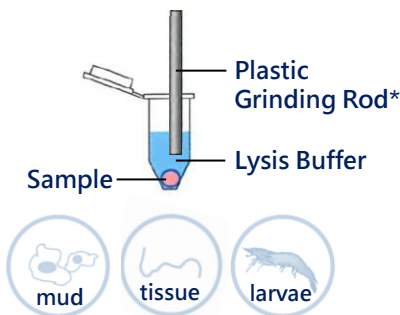
infected shrimp will gather at the bottom of the pond and do not show obvious symptoms. When the disease is noticed by shrimp farmers, the shrimp have already died in large numbers.

3 STEPs to identify the pathogens of the shrimp

Sample Collection

Direct PCR

Results Analysis



*to be supplied by the user

- ✓ Pre-program chip
- ✓ One-button start!
- ✓ Save time!
- ✓ Easy to use!

Qamp_{mini} Thermal Cycler



Qsep Series Fragment Analyzer

Q-Analyzer

- 1 ✓ User-friendly
- 2 ✓ 3 steps complete
- 3 ✓ Automated reporting

Qexp-Aqua Shrimp Disease Detection Kits "Features"

Extraction Free Direct PCR

No need for nucleic acids extraction
Start PCR after simple lysis
Save time and make it easier to operate
Simplified Genetic Testing

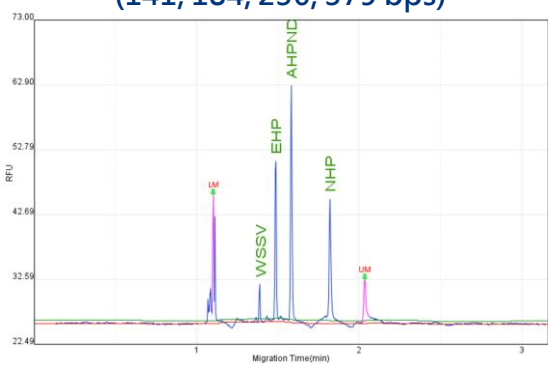


Quick, Precise and Simple

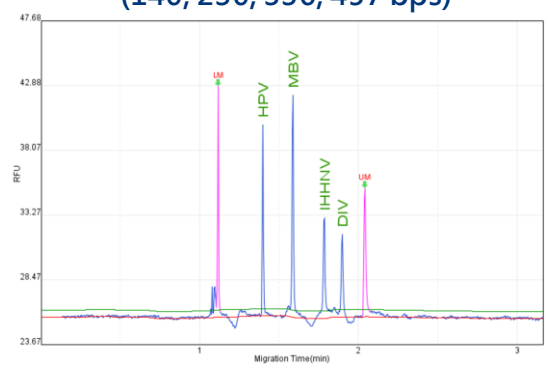
Common shrimp disease
detection kits to
effectively support shrimp
farmers in preventing
shrimp diseases!!

Results of Multiple Targets Analysis

WSSV, EHP, AHPND, NHP (141, 184, 230, 379 bps)

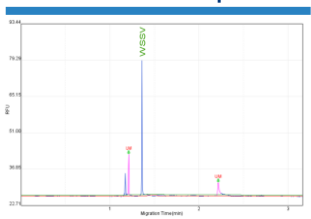


HPV, MBV, IHNV, DIV (140, 230, 336, 457 bps)

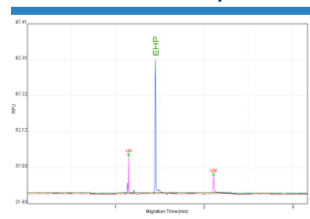


Results of Single Target Analysis

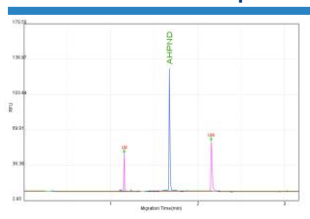
WSSV/80 bps



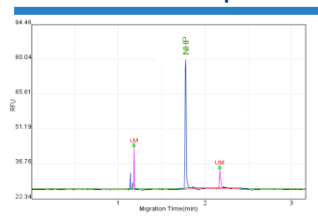
EHP/147 bps



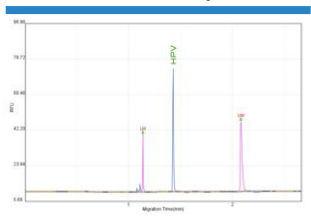
AHPND/180 bps



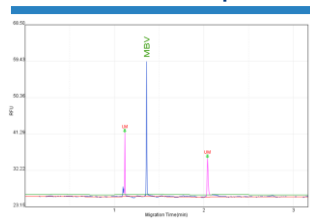
NHP/271 bps



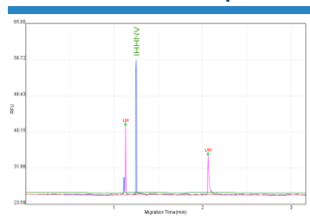
HPV/86 bps



MBV/126 bps



IHNV/67 bps



DIV/129 bps

